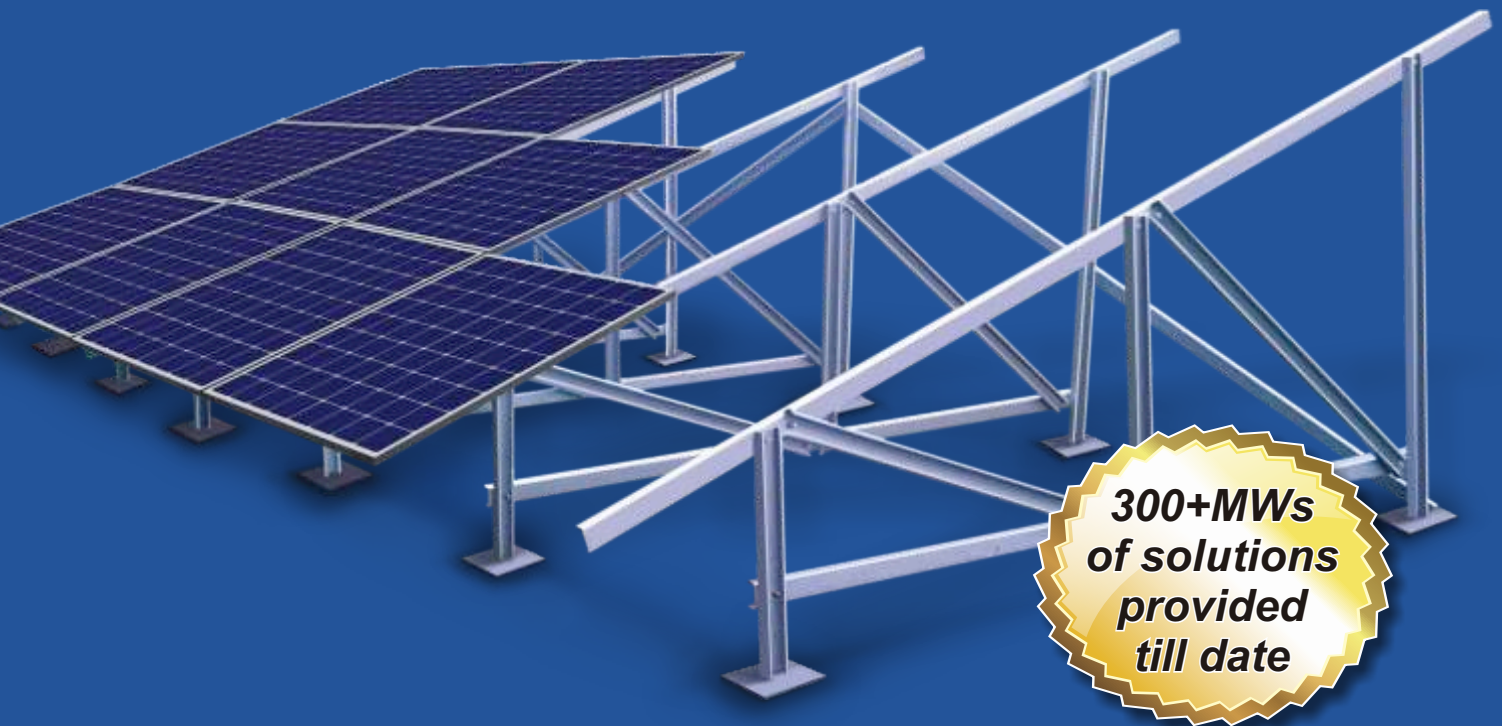




# Premium Solar Panel Mounting Solutions

for Ground and Roof Top Applications



**300+MWs  
of solutions  
provided  
till date**

LYSAGHT® brand offers solar support and PV module mounting systems for ground mounted and roof top applications. These customised structures are manufactured from cold rolled Zn/Al-Zn coated products and offer higher corrosion resistance, weight optimisation, quick installation and comes with a maximum warranty of 15 years\*.

The brand offers high quality products and cost effective solutions for executing turnkey solar power plant projects, this includes feasibility analysis, designing and material supply.

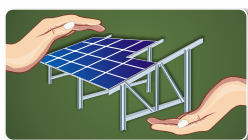
## Benefits

### Weight Optimisation



Specially designed 'C' Purlins are light weight yet high strength

### Customised Solutions



Products available in various coating thickness and dimensions as per requirements

### Quick to Install



Pre-punched & accurate design for easy and quick installation

### Economical



Savings on steel and overall project costs

### Durable



Manufactured from high strength Al-Zn coated steel

\*Subject to Terms & Conditions

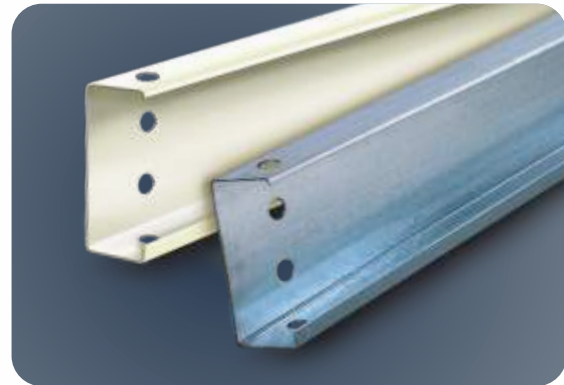


## Ground Mounting Solutions

LYSAGHT® brand offers Purlins for ground mounted application. These structures are manufactured from cold rolled Zn/Al-Zn coated products and are 4 times stronger than conventional mounting structures.

### Benefits

- Easily adaptable to various load criterions
- High strength for better load bearing capability
- Pre-punched structures require no welding, drilling and cutting on site
- Offers savings on overall project costs
- Manufactured from high strength Al-Zn coated steel in a wide range of colours



"C" Purlin

## Roof Top Mounting Solutions

LYSAGHT® brand offers a specially designed clip to frame the photovoltaic modules on concealed fixed roofing systems. LYSAGHT KLIP-LOK® roof profile is compatible for framing roof mounting solutions for solar panels.



KLIP-LOK® 700



Clip fixed on KLIP-LOK® 700

### Benefits

- Quick and easy to install
- Saves overall project costs

## Applications



For further technical assistance mail us at : [lysaght@tatabluescopesteel.com](mailto:lysaght@tatabluescopesteel.com)

### For more information, please contact:

North Region Gurgaon: Tel: +91 124 4712801  
 East Region Kolkata: Tel: +91 33 40061945  
 West Region Mumbai: Tel: +91 22 66743329  
 South Region Chennai: Tel: +91 44 42693319

Tata BlueScope Steel Ltd.  
 CIN: U45209PN2005PLC020270  
**Regd. Office:** The Metropolitan, 4th Floor,  
 Final Plot No. 27, Sr. No. 21, Wakdewadi, Shivaji Nagar,  
 Pune - 411005. INDIA. Tel: +91 20 6621 8000  
 Website: [www.tatabluescopesteel.com](http://www.tatabluescopesteel.com)  
 Email: [lysaght@tatabluescopesteel.com](mailto:lysaght@tatabluescopesteel.com)

Note:  
 ©2016 Tata BlueScope Steel Ltd. All rights reserved. No part of this brochure may be reproduced or transmitted in any form or by any means, electronic or mechanical including photocopy, recording or any information storage and retrieval system, without permission in writing from Tata BlueScope Steel Limited. All brand names mentioned in this brochure are registered trademarks of BlueScope Steel Limited under license to Tata BlueScope Steel Limited.