

Colour Range		COLORBOND® XRW steel	COLORBOND® Ultra steel
Dover White*	(SRI- 92)	✓	✓
Surfmist	(SRI- 87)	✓	✓
Tale Grey*		✓	✓
Light Ivory*		✓	✓
Burnt Almond*		✓	✓
Gull Grey*	(SRI- 69)	✓	✓
Windspray*	(SRI- 41)	✓	✓
Beige*	(SRI- 75)	✓	✓
Sand Beige*		✓	✓
Autumn Green*		✓	✓
Pale Eucalypt	(SRI- 44)	✓	✓
Aquamarine	(SRI- 41)	✓	✓
Traffic Green*		✓	✓

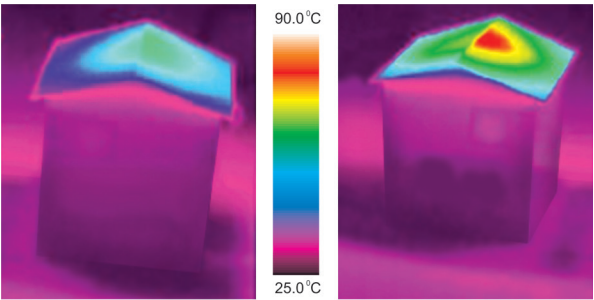
Note : These colour shades are only for reference. Due to printing limitations, the colour shades may vary.
*Non-standard colours



Cool Comfort

THERMATECH™ Solar Reflectance Technology is incorporated into COLORBOND® steel to lower temperature by absorbing less heat from the sun. COLORBOND® steel can reduce annual cooling energy consumption by up to 15%* and also reduces peak roof temperature by up to 6°C compared to roofing materials of similar colour with low solar reflectance. In other words, THERMATECH™ is able to increase the Solar Reflectance Index (SRI) of roofing material.

*Depending on level of insulation, colour, building shape, orientation and function.



COLORBOND® steel with THERMATECH™ Technology

Standard pre-painted steel



A Surety of Genuineness

COLORBOND® steel is supplied with a brand mark at regular intervals on the backer coat side of the strip. This assures highest quality, backed by the team of qualified, experienced personnel at Tata BlueScope Steel.

COLORBOND(R)XRW steel made by Tata BlueScope Steel G550 AZ150 0.45BMT (0.50TCT) 2406210000 09:24 30/05/15 1

Product Name	Steel Grade	Mother Coil No.	Mfg. Time & Date
	Coating Mass		
	Base Metal Thickness	Total Coated Thickness*	

(*Total Coated Thickness excludes paint thickness.)

COLORBOND® steel - Brandmark on the reverse side of strip



Environment Friendly

Steel is 100% recyclable - which means its life cycle is potentially continuous. COLORBOND® steel comes with several environment friendly credentials, few of which are:

- i. No heavy metal (Lead, Cadmium, Chromium, etc.) in the paint making it suitable for water harvesting.
- ii. No welding or wastage during construction; hence no damage to local flora and fauna.
- iii. Being coated steel, it has all three benefits of Reuse, Recycle & Reduce.

Peace of Mind

COLORBOND® steel is backed by a Tata BlueScope Steel Warranty*. With up to four times the lifespan of conventional pre-painted galvanised steel, you can be confident that COLORBOND® steel will keep your next project, and your reputation, looking good for years to come.

*Subject to terms and conditions

COLORBOND® steel is recognised by CII Indian Green Building Council (IGBC) as Green Product in Green Building Ratings



1800 2708333
TOLL FREE

Note:
©2019 Tata BlueScope Steel Pvt. Ltd. All rights reserved. This brochure and its content is copyright of Tata BlueScope Steel Pvt. Ltd.. No part of this brochure may be reproduced or transmitted in any form or by any means, electronic or mechanical including photocopy, recording, or any information storage and retrieval system, without permission in writing from Tata BlueScope Steel Pvt. Ltd.
ZINCALUME® steel and COLORBOND® steel are the registered trademarks of BlueScope Steel Limited under license to Tata BlueScope Steel Pvt. Ltd..



Tata BlueScope Steel Pvt. Ltd.
CIN : U45209PN2005PTC020270,
Regd. Office: The Metropolitan, Final Plot No. 27, Survey No. 21, Wakdevwadi, Shivaji Nagar, Pune - 411005. INDIA. Tel: +91 20 6621 8000, Email: coatedsteel@tatabluescopesteel.com Website: www.tatabluescope-cs.com

CSV12/0419/Savia



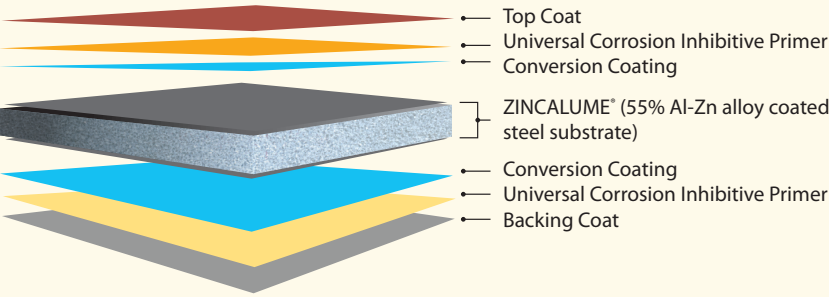
Benchmark for Long-Term Aesthetics

in Roof and Wall Cladding Application





COLORBOND® steel is one of the world's most advanced pre-painted steel products for the building and construction industry. COLORBOND® steel has been designed to provide an excellent strength of the steel base, the corrosion resistance of 55% Al-Zn Alloy coated ZINCALUME® steel and the superior aesthetics of an advanced paint system.



Cross Section View of COLORBOND® steel

COLORBOND® steel coils are typically supplied in various colours in grade G300 and G550 (yield strength of minimum 300 MPa and minimum 550 MPa) with base metal thickness ranging between 0.30 mm to 1.30 mm and widths of 900 mm to 1250 mm. COLORBOND® steel is designed for exterior environment and complies with AS/ NZS 2728, ASTM A 755M & IS 15965 standards.



Daramic Battery Separator India Pvt. Ltd., Gujarat

Colorbond® XRW

Premier roof & wall cladding material with high durability for general use



Mono Rail Stations, Mumbai

Colorbond® spectrum series

High durability and beauty of metallic with cost effective roofing and walling material.



Danfoss India, Chennai



Contemporary Aesthetics

Colour Choices

COLORBOND® steel is available in a wide range of colour palettes that is ultimate solution for beauty with creativity. These inspiring shades create a look that's 'just the way you want it'.

Design Flexibility

COLORBOND® steel offers architects, designers, builders and owners a versatile, lightweight, strong and aesthetically pleasing solution for almost any type of building and environment. Other products may look the same, but they don't always match the performance of COLORBOND® steel.



Durability

ZINCALUME® steel is the substrate for COLORBOND® steel. Tests performed in identical environments have demonstrated that, corrosion protection of COLORBOND® steel can last up to four times longer than corrosion protection provided by conventional pre-painted Zinc coated steel with similar paint coating thickness in roofing and wall cladding applications .



Assured Performance

Superior Paint Technology

COLORBOND® steel is not just painted, but has a paint system that delivers longer life and superior aesthetics.

✓ Resistance to Colour Change

The unique composition of the paint system consists of stable resins and inorganic pigments that do not break down easily even under severe UV radiation, thus preventing fading and chalking for longer.

✓ Superior Paint Adhesion

The coating of COLORBOND® steel is formulated to resist cracking and peeling during roll forming and usage.

✓ Proven Performance

COLORBOND® steel is tested by various methods to evaluate its performance in different environments. It is not just subjected to laboratory tests, but also out door exposure tests, to assess its paint performance and corrosion resistance.

Colour Range



COLORBOND® XRW steel

COLORBOND® Ultra steel

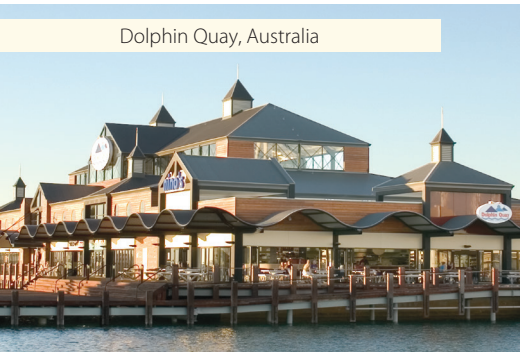
COLORBOND® XRW steel

COLORBOND® Ultra steel

Premium Range



Long term durability & exceptional corrosion resistance



Dolphin Quay, Australia

Colorbond® XPD

Durability, excellent weatherability and high formability



Exhibition Center, Australia



Aesthetically distinctive with metallic effect



BASF India Chennai, Tamil Nadu



Outdoor Exposure Site - Jamshedpur, India (Industrial)



Salt Spray Corrosion Resistance Testing



Colour Fading (Q-UV Tester)

COLORBOND® steel Spectrum Series

Silver Mirror*	Sky Ridge*	Champagne Gold*
Copper*	Pebble Grey*	Pearl Dark Grey*