



COLORBOND® Ultra steel

# Exceptional Corrosion Resistance

for Severe Environments



## Specifically Discovered for Severe Environments

For an attractive and long lasting roofing material that offers an excellent protection against severe environments, COLORBOND® Ultra steel is far the best choice.

While standard COLORBOND® steel will suit most of the applications, we also make specialist grades suited to more demanding environments, like those by the sea or in areas prone to industrial or chemical fumes and fallout.

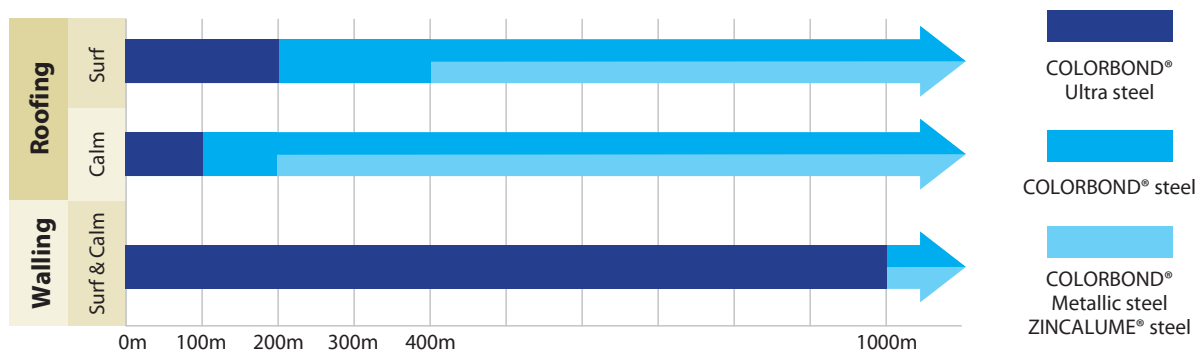
## Marine Influence

COLORBOND® Ultra steel combines durability with exceptional corrosion resistance. It is a highly recommended cladding material for environments in close proximity to marine exposure with extreme salinity in the air.



**Coastal Environmental**

**Product Selection Guidelines ( Indicative only)**



\*Surf – Areas exposed to breaking surf and ocean spray \*\*Calm – Protected areas of salt or brackish water including harbours, ports, bays and river estuaries. Where the product is used as a roof or walling in an environment that is subject to internal humidity such as a pool, it is essential to consult Tata BlueScope Steel Sales office for appropriate recommendation.

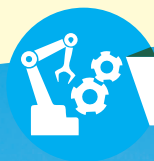


# Industrial Influence

COLORBOND® Ultra steel offers an attractive, long lasting cladding material with an excellent protection against effects of severe industrial environments such as heavy dust, emissions, contact with heat, moisture, corrosive chemicals or acids.



## Textile Industry



## Manufacturing Industry



Images are only for reference purpose, may not have direct relevance with COLORBOND® Ultra.



# Industrial Influence

An ideal solution for exterior applications; COLORBOND® Ultra steel gives total peace of mind due to its thicker metallic coating, with a minimum of 200 g/m<sup>2</sup> of the 55% Al-Zn alloy coating for even greater corrosion resistance and colour performance.



## Power Industry



## Oil & Gas Industry







## Refineries & Chemical Industry



## Food Processing

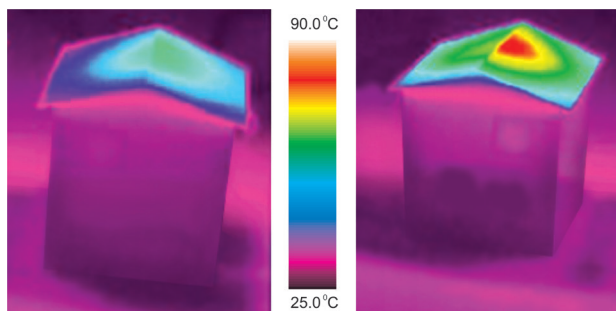




## Cool Comfort

THERMATECH™ Solar Reflectance Technology is incorporated into COLORBOND® steel to lower temperature by absorbing less heat from the sun. COLORBOND® steel can reduce annual cooling energy consumption by up to 15%\* and also reduces peak roof temperature by up to 6°C compared to roofing materials of similar colour with low solar reflectance. In other words, THERMATECH™ is able to increase the Solar Reflectance Index (SRI) of roofing material.

\*Depending on level of insulation, colour, building shape, orientation and function.



COLORBOND® steel with THERMATECH™ Technology

Standard pre-painted steel



## Genuine product

COLORBOND® Ultra steel is supplied with a brand mark at regular intervals on the backer coat side of the strip. This assures highest quality, backed by the team of qualified, experienced personnel at Tata BlueScope Steel.

## Peace of Mind

COLORBOND® steel is backed by a Tata BlueScope Steel Warranty\*. With up to four times the lifespan of conventional pre-painted galvanised steel, you can be confident that COLORBOND® steel will keep your next project, and your reputation, looking good for years to come.

\*Subject to terms and conditions

COLORBOND® Ultra steel made by Tata BlueScope Steel G550 A2200 0.45BMT (0.50TCT) 2406210000 09:24 30/05/15 1

Product Name

Steel Grade  
Coating Mass  
Base Metal Thickness

Mother Coil No.  
Total Coated Thickness\*

Mfg. Time & Date

COLORBOND® steel - Brandmark on the reverse side of strip

(\*Total Coated Thickness excludes paint thickness.)

COLORBOND® steel is recognised by CII Indian Green Building Council (IGBC) as Green Product in Green Building Ratings



Contemporary Aesthetics



Durability



Cool Comfort



Assured Performance



A surety of Genuineness



Environment Friendly



**Tata BlueScope Steel Pvt. Ltd.**  
CIN : U45209PN2005PTC020270,  
Regd. Office: The Metropolitan, Final Plot No. 27,  
Survey No. 21, Wakdevwadi, Shivaji Nagar,  
Pune - 411005. INDIA. Tel: +91 20 6621 8000,  
Email: coatedsteel@tatabluescopesteel.com  
Website: www.tatabluescopesteel.com

### Note:

©2019 Tata BlueScope Steel Pvt. Ltd. All rights reserved. This brochure and its content is copyright of Tata BlueScope Steel Pvt. Ltd.. No part of this brochure may be reproduced or transmitted in any form or by any means, electronic or mechanical including photocopy, recording, or any information storage and retrieval system, without permission in writing from Tata BlueScope Steel Pvt. Ltd..  
ZINCALUME® steel and COLORBOND® steel are the registered trademarks of BlueScope Steel Limited under license to Tata BlueScope Steel Pvt. Ltd..