

Colorbond®



# 10 Good Reasons

to believe in COLORBOND® steel for  
Roof and Wall Cladding Application



  
**TATA BLUESCOPE  
STEEL**





COLORBOND® steel is one of world's most advanced pre-painted steel products, manufactured & marketed by Tata BlueScope Steel.

## 10 Reasons To Believe So:

### State – of –the- art manufacturing facility

COLORBOND® steel is manufactured at Jamshedpur facility, accredited with ISO9001, ISO14001, ISO45001 certifications - a testimony to its quality and performance. Our coating mass control system and uniform paint coating thickness technology is amongst the most advanced in the world.

Consistent and superior performance is achieved through precise control in input steel chemistry, the highest degree of automation, process control and facilities for an online testing & visual inspection for both surfaces supported by well-equipped central laboratory.

COLORBOND® steel coils are typically manufactured in various colours in grade G300 and G550 (yield strength of minimum 300 MPa and minimum 550 MPa) with base metal thickness ranging between 0.30 mm to 1.30 mm and widths of 900 mm to 1250 mm. COLORBOND® steel is designed for exterior environment and complies with AS/NZS 2728, ASTM A 755M & IS 15965 standards.



Colour coating line, Jamshedpur



Our process accreditations



Manufacturing facility, Jamshedpur

# 2

## Decades of Proven Performance

The performance of COLORBOND® steel has been rigorously tested under various climatic conditions. For over five decades BlueScope steel (JV partner) company has monitored the product's performance across a wide range of climatic conditions using exposure test sites and infield inspections. There are thousands of test samples undergoing outdoor exposure tests at many sites in Australia, New Zealand, Asia and now in India (already more than 5 year old test sites).

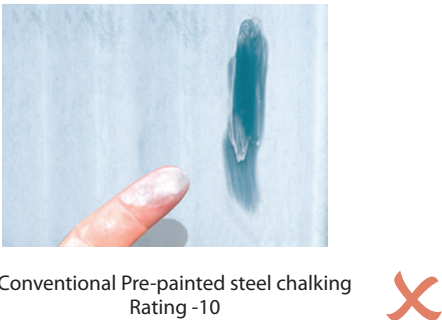


Exposure site : Bellambi Point Australia (Marine)

### Colour Performance : 4 year Exposure at High UV test site



### Colour Performance : 6 year Exposure



# 3

## A Significantly Longer Lifespan

ZINCALUME® steel is the substrate for COLORBOND® steel. ZINCALUME® steel was developed after extensive research for improving the traditional performance of galvanised steel. Blending 55% Aluminium with 43.4% Zinc & 1.6% Si in an alloy coating, enhances corrosion resistance. The extensive testing program confirms that lifespan of COLORBOND® steel - Prepainted ZINCALUME® steel AZ150 is upto four times that of conventional pre-painted galvanised Z275 steel in similar environmental conditions.

### After 6 year exposure at severe marine test site



Tests have demonstrated that corrosion protection of COLORBOND® steel can last up to four times longer than corrosion protection provided by conventional pre-painted Zinc coated steel even with similar paint coating thickness in roofing and wall cladding applications in identical environments.



# 4

## Cool Comfort for Building Occupants

COLORBOND® steel with THERMATECH™ solar reflectance technology sets new benchmarks, providing owners, architects, builders and developers with better choices to meet the challenges of a changing world. THERMATECH™ technology optimises the solar reflectance properties of COLORBOND® steel especially in standard colors. With THERMATECH™ technology, COLORBOND® steel, even the darker color range performs better with respect to thermal efficiency of the building without changing their appearance. So you can choose from a wider range of colors and still enjoy benefits of a thermally efficient roof. THERMATECH™ technology helps your roof and your building stay cooler by reflecting more heat rays from sun. When heat is reflected away from your building, air-conditioning has an easier job keeping your building cool. Using less energy to cool your building will help occupants save money on energy costs as well as potentially reduce emissions from electricity generation.

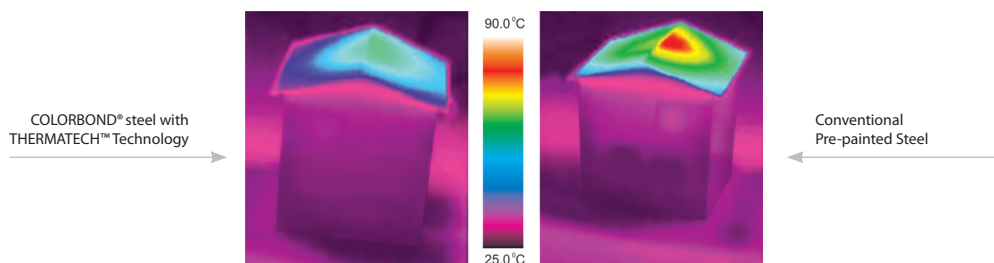
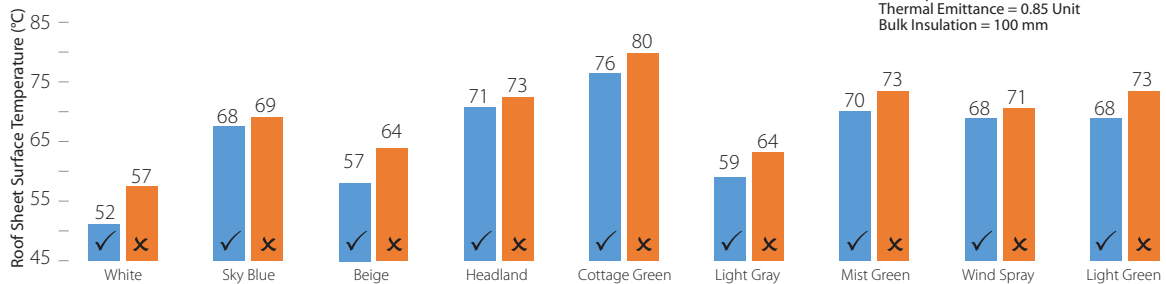
COLORBOND® steel with THERMATECH™ technology can reduce annual cooling energy consumption by up to 15% and also reduces peak roof temperature by up to 6°C, compared to roofing materials of similar colour with low solar reflectance. (Average reduction is about 5%; results will depend on level of insulation, building shape and function).

✓ - COLORBOND® steel

X - Conventional pre-painted steel in similar colour

\* Assuming climatic conditions as under

Solar Radiation = 1000W/sq.m  
Exterior Temperature = 36°C  
Wind Speed = 0 Unit  
Thermal Emittance = 0.85 Unit  
Bulk Insulation = 100 mm





# 5

## Long term Aesthetics

The distinctive surface of COLORBOND® steel draws on the environment and surrounding structures to enhance the prestigious appearance of your building with remarkable effects. Super Durable Polyester Paint applied to the COLORBOND® steel provides high resistance to chipping, peeling and cracking. More stable Super Durable Polyester paint system and inorganic pigments with higher solar reflectance property (THERMATCH™ Technology) ensure durability, thereby aesthetics of COLORBOND® steel lasts for longer.

**COLORBOND® Steel** is a living example of an indomitable spirit



2009



2019

# 6

## Choice of Products for your Needs

Tata BlueScope Steel has been offering wide range of products in the market to suit as per the requirements (i.e. site location from industrial or marine influence, building usage (i.e. factory or public /private), aesthetics requirement (i.e. Corporate buildings, Malls, Stadium, Airport, Railways, Metro terminals etc).

	COLORBOND® XRW steel	COLORBOND® steel Spectrum Series	COLORBOND® Ultra steel	COLORBOND® XPD steel	COLORBOND® Metallic steel
Features	High Durability, premium roof & wall cladding material	High Durability & beauty of metallic with cost effective	Long Term Durability and exceptional corrosion	Durability, Excellent weatherability & high formability	Durability & metallic Appearances for architecturally -superior, asthetic buildings resistance for severe environment
Metallic Coating	AZ150	AZ150	AZ200	AZ150	AZ150
Long Term Aesthetics	Very Good	Very Good with Metallic finish	Very Good	Excellent	Excellent with Metallic Finish
Durability	High	High	Very High	High	High
"Product Type w. r. t. Corrosion Category (AS/NZS 2728)"	Type 4	Type 3	Type 4	Type 3	Type 3

Environmental Conditions :-



Rural & Urban



Industrial



Severe Marine



Heavy Industrial

# 7

## Environment Friendly Credentials

From an environmental point of view steel is one of the great performers. Steel is 100% recyclable - which means its life cycle is potentially continuous. COLORBOND® steel comes with several environment friendly credentials, few of which are:

- No heavy metal (Lead, Cadmium, Chromium, etc.) in the paint making it suitable for water harvesting.
- No welding or wastage during construction; hence no damage to local flora and fauna.
- Being coated steel, it has all three benefits of Reuse, Recycle & Reduce.



Rainwater Harvesting



# 8

## Genuine product

COLORBOND® steel is supplied with a brand mark at regular intervals on the backer coat side of the strip. This assures highest quality, backed by the team of qualified, experienced personnel at Tata BlueScope Steel.

COLORBOND(R)XRL steel made by Tata BlueScope Steel G550 AZ150 0.45BMT (0.50TCT) 2406210000 09:24 30/05/15 1									
Product Name		Steel Grade		Coating Mass		Base Metal Thickness		Mother Coil No.	
								Mfg. Time & Date	
								Total Coated Thickness*	

**COLORBOND® steel - Brandmark on the reverse side of strip**

(\*Total Coated Thickness excludes paint thickness.)

# 9

## Peace of Mind

COLORBOND® steel is backed by a Tata BlueScope Steel Warranty\*. With up to four times the lifespan of conventional pre-painted galvanised steel, you can be confident that COLORBOND® steel will keep your next project, and your reputation, looking good for years to come.

\*Subject to terms and conditions

# 10

## Range of Colours to Choose from

COLORBOND® steel is available in a wide range of colour palettes that is ultimate solution for beauty with creativity. These inspiring shades create a look that's 'just the way you want it'. COLORBOND® steel offers architects, designers, builders and owners a versatile, lightweight, strong and aesthetically pleasing solution for almost any type of building and environment. Other products may look the same, but they don't always match the performance of COLORBOND® steel.

(SRI - 92) Dover White*	(SRI - 87) Surfmist	Tale Grey*	Light Ivory*	Burnt Almond*
(SRI - 69) Gull Grey*	(SRI - 45) Windspray*	(SRI - 75) Beige*	Sand Beige*	Autumn Green*
(SRI - 44) Pale Eucalypt	(SRI - 41) Aquamarine	Traffic Green*	Environmental Green*	Mist Green*
(SRI - 46) Sky Blue	(SRI - 37) Toba Blue	Traffic Blue*	Torres Blue	Headland
Basalt*	Charcoal Grey*	Iron Stone*	Cottage Green	Manor Red*

COLORBOND® steel Spectrum Series

Silver Mirror*	Pebble Grey*	Sky Ridge*	Champagne Gold*	Copper*	Pearl Dark Grey*
----------------	--------------	------------	-----------------	---------	------------------

Note : These colour shades are only for reference. Due to printing limitations, the colour shades may vary.

\*Non Standard Color



# Colorbond®



Balewadi Stadium, Pune



Contemporary  
Aesthetics



Durability



Cool Comfort



Assured  
Performance



A surety of  
Genuineness



Environment  
Friendly

 **1800 2708333**  
TOLL FREE

  
**TATA BLUESCOPE  
STEEL**

**Note:**

©2019 Tata BlueScope Steel Pvt. Ltd. All rights reserved. This brochure and its content is copyright of Tata BlueScope Steel Pvt. Ltd. No part of this brochure may be reproduced or transmitted in any form or by any means, electronic or mechanical including photocopy, recording, or any information storage and retrieval system, without permission in writing from Tata BlueScope Steel Pvt. Ltd. "ZINCALUME" steel and COLORBOND® steel are the registered trademarks of BlueScope Steel Limited under license to Tata BlueScope Steel Pvt. Ltd.

**Tata BlueScope Steel Pvt. Ltd.**  
CIN : U45209PN2005PTC020270,  
**Regd. Office:** The Metropolitan, Final Plot No. 27,  
Survey No. 21, Wakdevadi, Shivaji Nagar,  
Pune - 411005. INDIA. Tel: +91 20 6621 8000,  
Email: coatedsteel@tatabluescopesteel.com  
Website: www.tatabluescopesteel.com